



PCC housing block & Environment Bill project

Ashleigh Moore & Rebecca Adams



Background

- A few factors have resulted in a need to look at PCC's stock of housing blocks:
 - ☐ Environment Act 2021
 - ☐ Clean Air Zone (CAZ)/Air quality
 - ☐ Waste provision at housing blocks

Environment Act 2021

Enacted last year from Environment Bill:

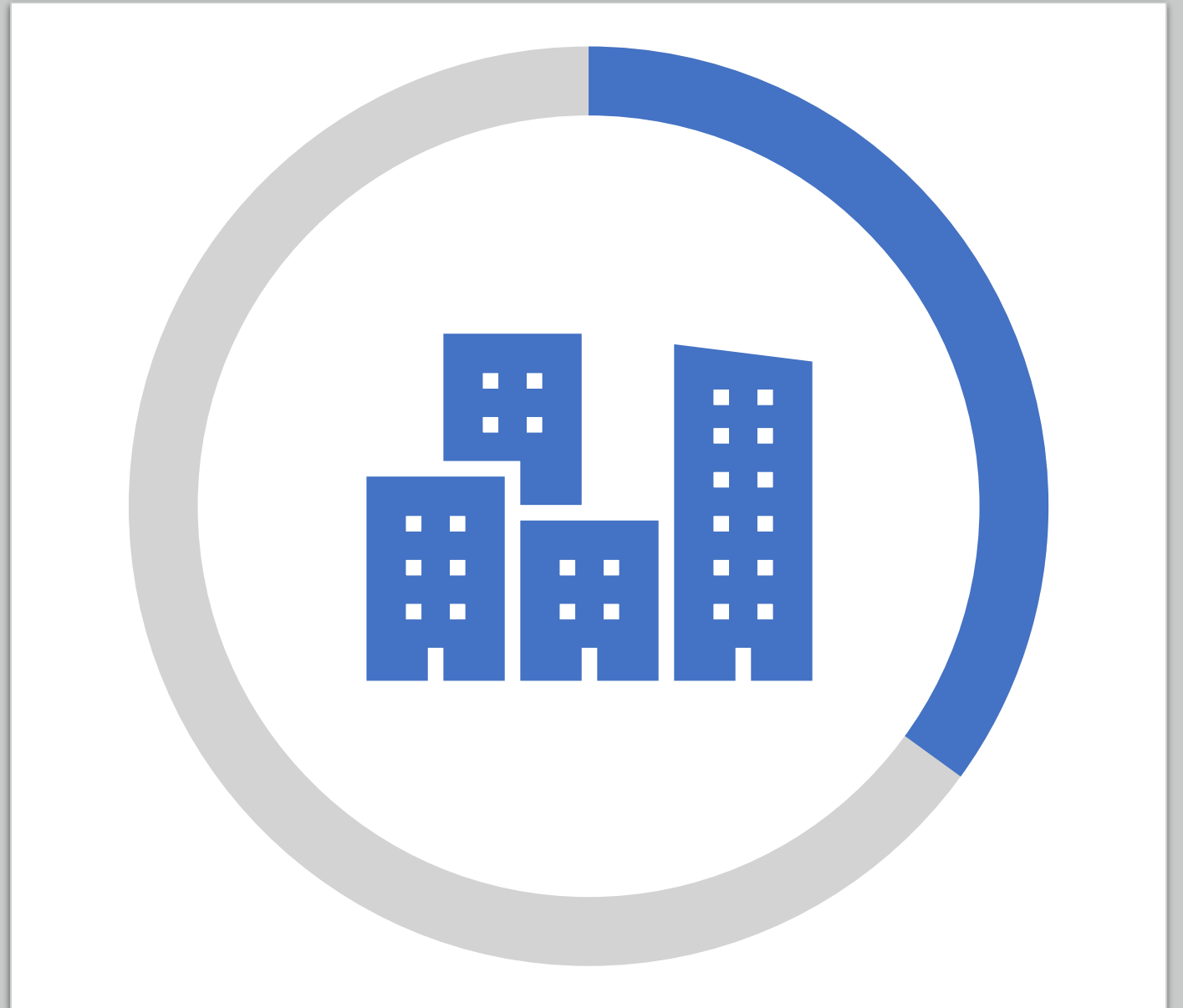
- Mandate separate food waste collections for domestic and small & medium businesses
- Increased provision of recyclable material (PTT, flexible plastics, glass, cartons & foil trays) – core set of materials
- Increase separation of different recycling material stream

Secondary legislation coming 2022

- Awaiting consultation responses from DEFRA
- Provide more details on how/when we will need to collect separate food waste and confirmation on recyclable materials

CAZ/Air Quality

- CAZ introduced in 2021
- ~ 35% of PCC housing blocks are within the CAZ
- Limit number of waste collection vehicle movements around the City
- Increased number of movements due to additional recycling streams
- Reduce multiple visits per week for rubbish collections



Waste Provision at PCC Housing Blocks

Inadequate provision of recycling – drives wrong behaviour



Increased need for more refuse capacity



Overflowing refuse bins and increased collection frequency/more refuse bins



Aims

Project will look at the whole of PCC housing stock as we have a landlord responsibility to make sure waste provision is adequate now and in the future

- ✓ Provide correct bin provision and capacity for rubbish collections
- ✓ Provide sufficient recycling provision and capacity
- ✓ Remove barriers to recycling and empower/educate residents to recycle fully and correctly
- ✓ Reduce ASB and dumping around bin stores



Future of Waste Collections

- Separate food waste collections
- Separate card & paper collections (Fibre)
- Dry mixed recycling
- Rubbish



Trial

Blocks to trial

- Berry House – Buckland
- Picton House – Somerstown
- Leominster House – Paulsgrove
- Gerard House – Hilsea
- Millgate House – Portsea

Range of sizes, styles, and average number of bedrooms

Waste Provision



Each block will have:

Weekly refuse collection

Separate dry mixed recycling bin for
plastic bottles, food/drink tins and cans,
and aerosol cans

Separate fibre bin for card and paper

Glass bin

Food waste bin

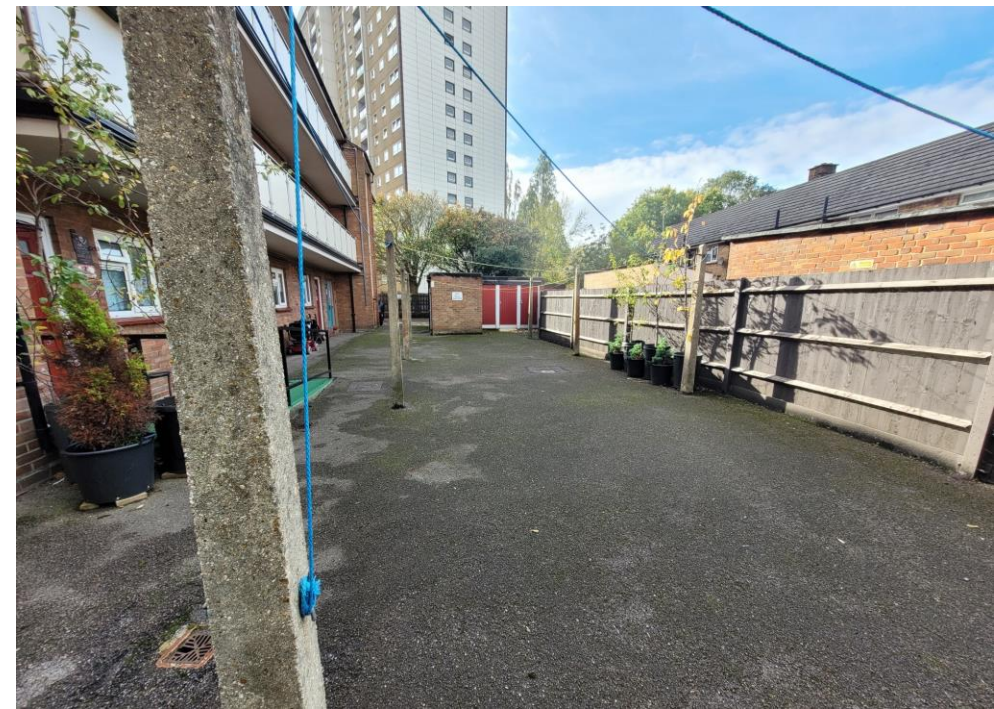
Small electrical items bin



Berry House - Buckland

Summary:

- HH – 9
- Av. no. of bedrooms – 1.8
- Brick bin store with concrete steps - limited space





Picton House - Somerstown

Summary:

- HH – 19
- Av. No. of bedrooms – 1.7
- Two internal bin stores with ramp
- Recycling outside





Leominster House - Paulsgrove

Summary:

- HH – 12
- Av. no. of bedrooms – 1.8
- Two bin locations – side access
- Narrow pathways, steps & grass





Gerard House - Hilsea

Summary:

- HH – 20
- Av. no. of bedrooms – 2.9
- Two brick bin stores with concrete steps
- Large courtyard with multiple exit points



Millgate House - Portsea

Summary:

- HH – 76
- Av. no. of bedrooms – 1.2
- Internal bin store for rubbish
- Chute system for rubbish
- Recycling bins and glass bank outside on the pavement





Communications



Resident Consortium



Letters & door knocking



Stickers & signage – new designs



Information packs



Resident survey

Examples of bin stickers and signage



Key dates



June 22

Area office engagement
Estates teams' engagement



July 22

7th Residents Consortium
Week commencing 11th July - letter drop & door knocking, alterations to bin stores
Week commencing 25th July – info & resources pack drop



August 22

Bins swapped over week commencing 1st August, trial live



Sept/Oct 22

Resident survey – housing wide



January 23

Where can we go next?
Expansion plan tbc



2023/24

Environment Bill in force,
new container MRF online